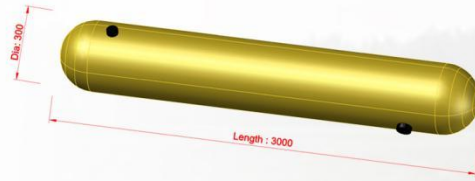




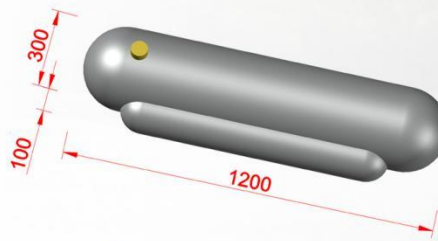
# FLOOD TUBE

防洪坝

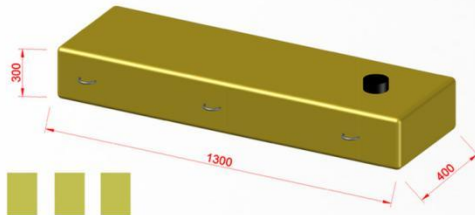




LT- T001: Small size for doors, shop  
LT-T001: 小尺寸用于挡家门, 小店



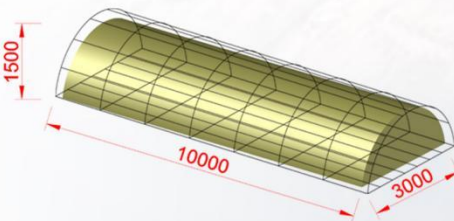
LT- T002: Double tube for reinforce its function.  
LT-T002: 两管可加固阻挡洪水作用



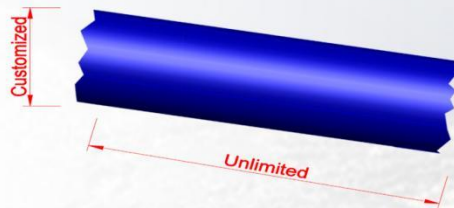
LT- T003: With light tarp for identifying flood's high.  
LT-T003: 小而轻的帆布可帮助识别洪水高度



LT- T004: Size customized for house  
LT-T004: 尺寸可为房屋定制



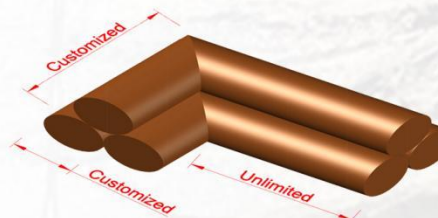
LT- T005: Big size need mesh for fixing  
LT-T005: 大尺寸防洪坝要网来定型



LT- T006: Length is unlimited  
LT-T006: 防洪坝的长度可无限延长



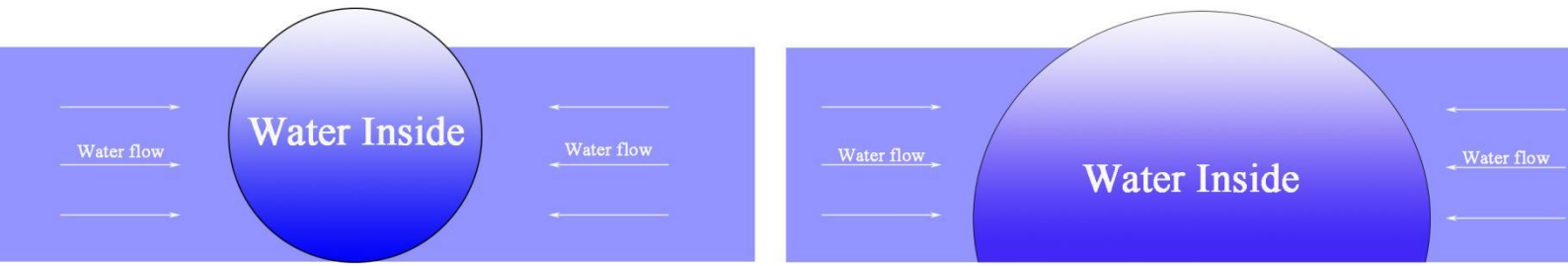
LT- T007: New idea with skirt for strengthening flood defense  
LT-T007: 新设计加裙摆, 用于巩固防洪功能



LT- T008: Three tube for multifunctional use. Can disassemble & recombine  
LT-T008: 三管防洪坝可多种用途, 可拆卸, 可重组

# HOW DOES IT WORK ? 工作原理

According to gravity of earth, fill water inside the tube against flood. Principle is simple, and it can works .  
利用地球的重力，充水到防洪坝里来抵抗洪水，原理很简单而且可行性强。



## Why Are FLOOD TUBE Your Best Choice for Flood Control?

### 为什么我们的防洪坝是你最好的选择？

Most experts agree flood tube are the best solution for flood control; and LTCANOPY flood tube are superior for the following reasons: 专家认为防洪坝是最好的防洪产品，而我们的是最好的选择：

1. **Adaptability**– Use in every type of landscape and weather condition

适应性强：可用于多种地型和不同的天气环境

2. **Affordability**– They are less labor intensive than traditional sand bags, use on-site water and are reusable

性价比高：与传统的沙袋相比，它们的劳动强度更低，可就地用水，并可重复使用

3. **Customized**– High can design and unlimited lengths

可定制：高度按客户要求，长度无限制

4. **Durability**– Made of strength materials that can withstand tremendous water pressure

耐用性：高强度材料，可承受巨大水压

5. **Flexibility**--You can modify the dam into any shape you want promptly. They will go round bushes, wind around grounds, cover a home and shed, all with ease.

灵活性: 可以立即将大坝修改成您想要的任何形状。他们会绕过灌木丛，绕着地面蜿蜒延长，覆盖房屋和棚屋，一切都很轻松搞定

6. **Portability**– Can go anywhere and easy to transport.

可携带性：可以用于不同地方，可转运

7. **ECO-Friendly**--These dams don't require any extensive site preparation, You don't have to cut trees or destroy structures, it goes around them.

The soil is minimally disrupted thereby preventing soil erosion.

这些水坝不需要任何广泛的场地准备，您不必砍伐树木或破坏建筑物，它会绕过它们。

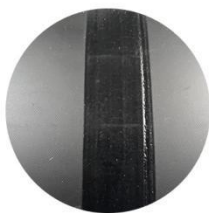
土壤受到最小程度的破坏，从而防止水土流失。



# PRODUCTS DETIALS AND STANDARD SIZE 产品详情和常规尺寸



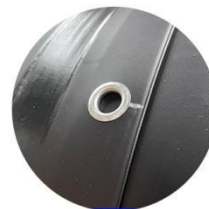
Connecting (连接处)



High Frequency heat sealing  
高频焊接



Inlet (Size Optional)  
进水口 (可选性)



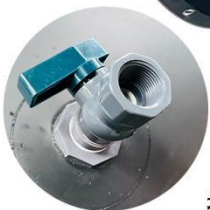
Grommets  
帆圈



D-RING  
D字扣



Handle  
把手



Outlet  
排水口



Connecting B  
连接处-B



Connecting A  
连接处-A

Name 产品名称	Picture Display 应用图	Size 尺寸	INLET.PCS 进水口个数	OUTLET.PCS 出水口个数	Net. Weight(KG/Per pcs) 净重/件.KG
FLOOD TUBE 防洪坝		DIA :30 CM x L:30 M	1	1	60
		DIA :30 CM x L:50 M	1	1	104
		DIA :50 CM x L:30 M	1	1	104
		DIA :50 CM x L:50 M	1	1	173
		DIA :100 CM x L:30 M	1	1	213
		DIA :100 CM x L:50 M	1	2	352
		DIA :120 CM x L:30 M	1	2	258
		DIA :120 CM x L:50 M	1	2	424

# MANUFACTURE AND CONTACT 生产和联系方式

Different shape request by client to manufacture, we try our best to satisfy with., Over diameter 2m , need frame belt for fixed it . Ten meter high is the maximum size. We will according to client's situation to solve and make a perfer plan.

按客户需要而生产不同形状的防洪坝，我们尽全力满足客户需求。直径超过2米的防洪坝，需要巩固带，10米的是最高的高度。按客户实际情况而制定一份完美的计划

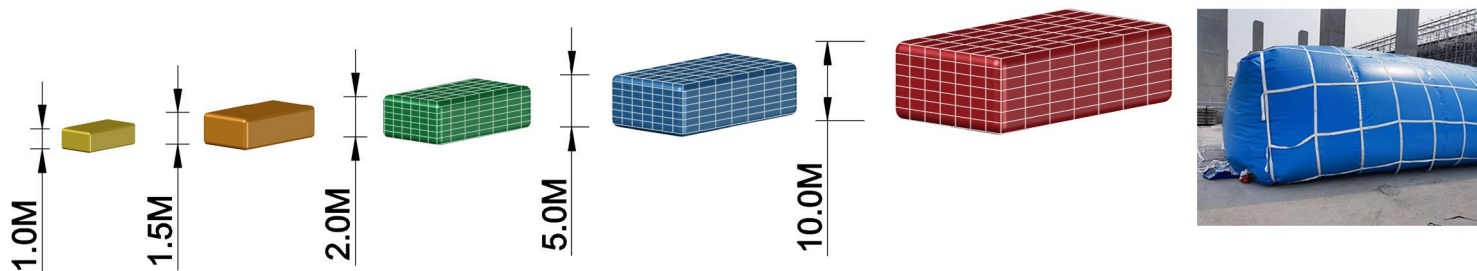
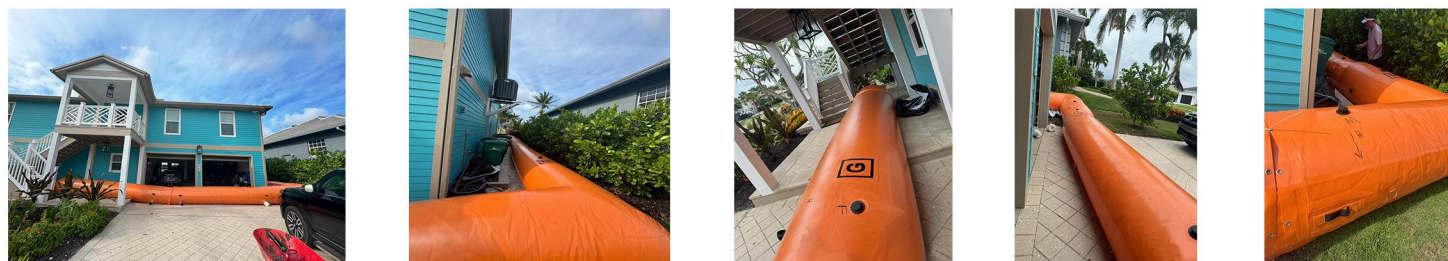


Material are strong waterproof, flexible, mildew proof , anti-UV, acid and alkali resistant, it pass ROHS, REACH report . testing by third party. Various features make its liferspan long.

If quantity order enough, color can design, and we also have many color to choose in stock .

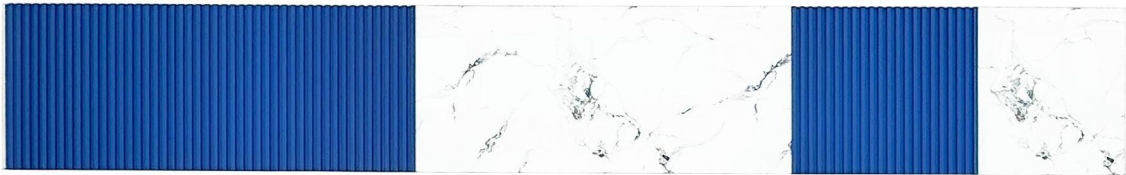
材料防水、柔韧、防霉、抗紫外线、耐酸碱，通过 ROHS、REACH 报告和第三方检测。多种性能加持令产品的使用寿命更长久。

如果订购数量足够，颜色可以设计，我们也有多种颜色的库存可供选择。





**LiTong**  
**利通**



Defining Canvas Quality: From a 6S Benchmark Factory.  
定义帆布品质：源自6S级标杆工厂。 <<<

Company name : FoShan LiTong FanPeng Co. ,LTD.

Add: Building 1, No.88, Xingye East Road, Henggang, shishan Town, Nanhai District, Foshan City,  
Guangdong province , China , 528225

Email: [yannis@ltcanopy.com](mailto:yannis@ltcanopy.com)

Attn : Mr.Ou

Phone / Wechat / Whatsapp : 86-15813613056

公司名称：佛山市利通帆蓬有限公司

营业地址：佛山市南海区狮山镇横岗兴业东路88号1号楼

电话：0757-85772947

联系人：区先生

邮件： [yannis@ltcanopy.com](mailto:yannis@ltcanopy.com)

